

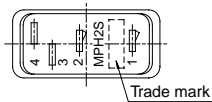
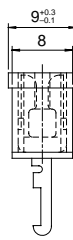
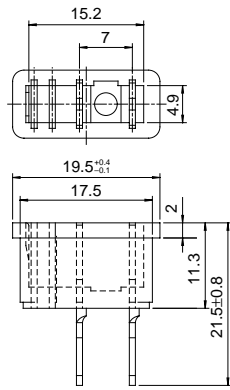
MP Fuseholder

(For fuses, type MP, SMP)

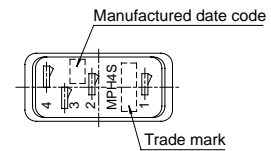
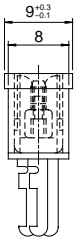
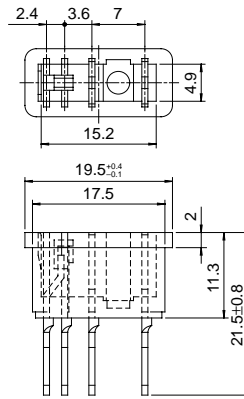
●Color : Light Blue

MPH-2S, 4S (For soldering)

MPH-2S
Net weight
2.1g

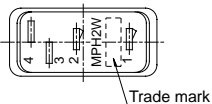
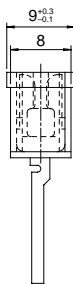
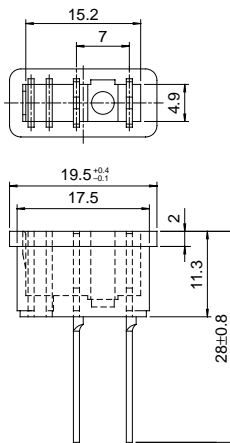


MPH-4S
Net weight
2.7g

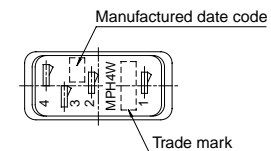
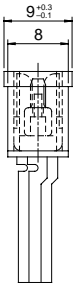
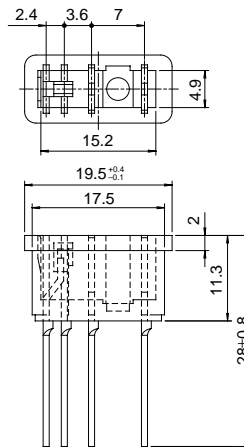
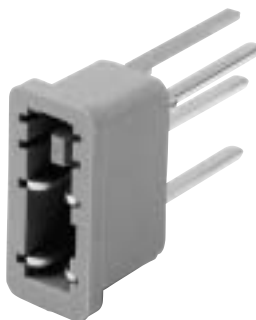


MPH-2W, 4W (For wrapping)

MPH-2W
Net weight
2.2g



MPH-4W
Net weight
2.9g



MP Fuseholder

(For fuses, type MP, SMP)

Cat. No.	Rated voltage	Rated current		Withstand voltage		Insulation resistance	Contact resistance
		Main circuit	Alarm circuit	Between alarm terminals, Alarm and load terminal	Other		
MPH-[]S*	AC/DC 125V	7.5A	0.5A (25VA)**	AC750V 1min	AC1,500V 1min	Min. 100MΩ at 500VDC	Max. 5mΩ per terminal (5VDC 100mA)
MPH-[]W							
MPH-[]P							
MPH-2PD							
MPH-4PA							
MPH-[]V							

* [] mean either "2" or "4".

**Alarm contact for type MPH-4

Terminal

Holder terminal	MPH-2[] (Without alarm contact)*	MPH-4[] (With alarm contact)*
1	Power supply or load terminal	Power supply terminal
2		Load terminal
3	—	Alarm load terminal
4	—	Alarm power supply terminal

* [] mean either S,W,P or V

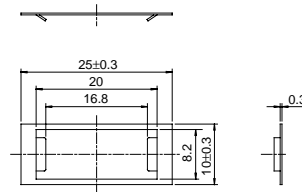
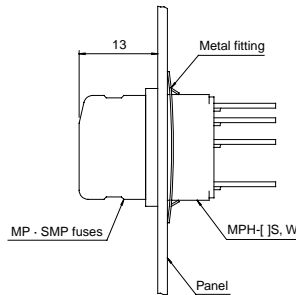
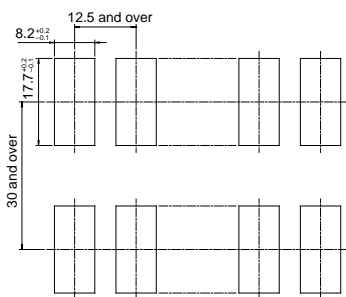
MPH-2S, 4S and 2W, 4W

Mounting dimensional drawing

Mounting view

Metal fitting (Dimensional drawing)

Mounting tool



These fuseholders are mounted on panel by metal fitting using by the tool.

W-type holders, Connection wire and wrapping

■ Connection wire for use on W-type holders
Standard : ϕ 0.4mm (ϕ 0.8mm-acceptable)

■ Torque strength

On terminals 1 and 2 : 0.15 N · m

On terminals 3 and 4 : 0.1 N · m

Connection wire materials for use on S-type holders

Terminals	Wire material	Stranded wire	Solid wire
Power supply terminal		max. 50/ ϕ 0.18	max. ϕ 1.2
Load terminal			
Alarm terminal		max. 30/ ϕ 0.18	max. ϕ 0.8

MP Fuseholder

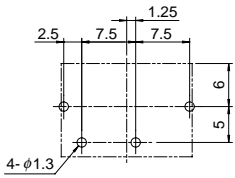
(For fuses, type MP, SMP)

MPH-[]P-V

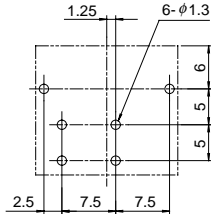
Mounting hole dimensions for P.C.B. (Tolerance : ± 0.1) Bottom view

Mounting view

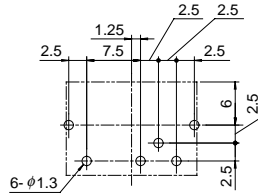
MPH-2P



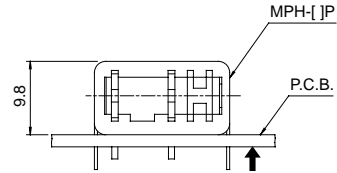
MPH-2PD



MPH-4P

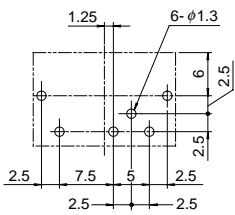


MPH-[]P

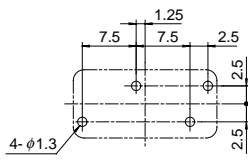


The Layout of mounting holes seen from the direction of the arrow in the mounting method drawing.

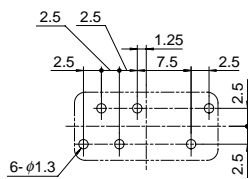
MPH-4PA



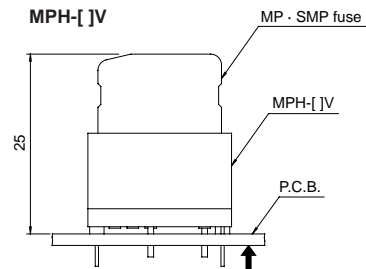
MPH-2V



MPH-4V



MPH-[]V



Pattern design reference dimensions for the MP fuseholders (P-and V-types)<Unit in mm>

Circuit	Applicable fuse type	Min. conductor width			Min. round diameter	Hole diameter
		MPH-[]V*		MPH-[]P*		
		12.5 Mounting pitch	25 Mounting pitch	30 Mounting pitch		
Main circuit	MP032, 05, 063, 10, SMP10	3	1	1	2.5	1.3
	MP16, 20, SMP16, 20	3	2	2		
	MP32, 50, SMP32, 50	3	3	3		
	MP63, MP75, SMP75	-	5	5		
Alarm circuit	MP fuse SMP fuse	0.5				

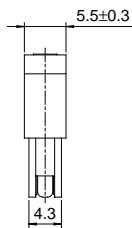
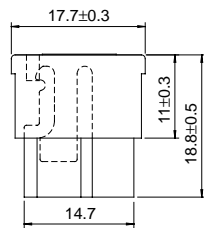
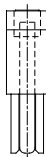
* [] mean either 2 or 4

Plugs, type MP

● Short plug : White, Blank piece : Milky

MP short plug

Net weight 2.9g



MP blank piece

Net weight 0.9g

