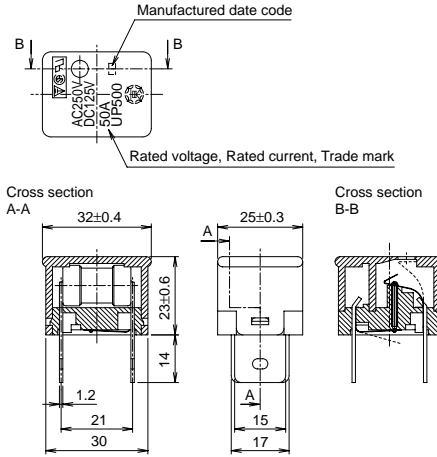


UP Fuse

Normal blow



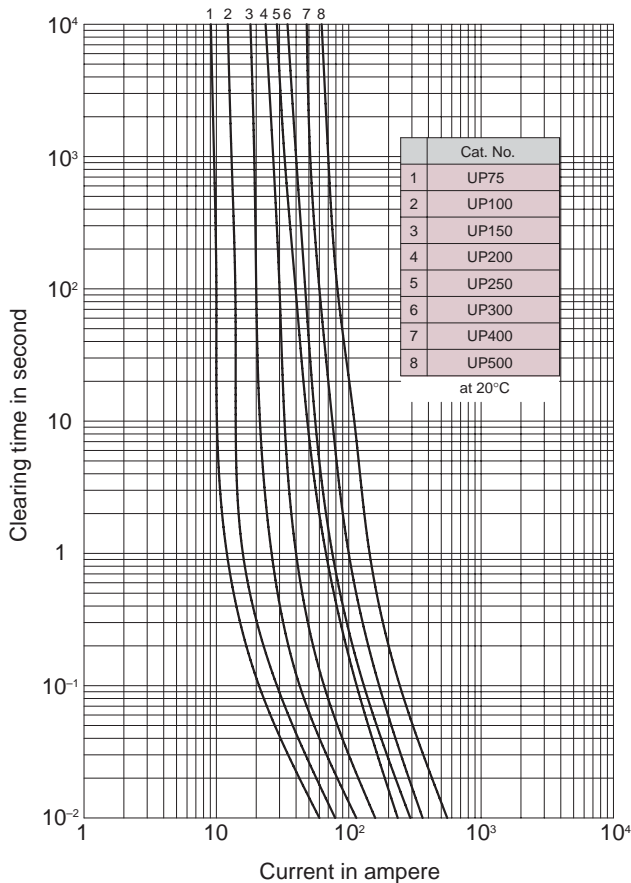
- Physical Size · Net Weight
32 × 25 × 37mm 26g
- Color
Black
- Package
5Pcs/Box
- Applicable Fuseholders
UPH, UP-403A

| Carrying Capacity | Clearing Time |
|-------------------|---|
| 110% | 135% within 1 hour 200% within 2 minutes |

| Cat. No. | Rated Current | Breaking Capacity | Typ. Resistance*1 |
|----------|---------------|--|-------------------|
| UP75 | 7.5A | | 20mΩ |
| UP100 | 10A | AC 125V 10,000A | 12mΩ |
| UP150 | 15A | DC 125V 1,500A | 8mΩ |
| UP200 | 20A | | 6mΩ |
| UP250 | 25A | AC 250V 2,500A | 4mΩ |
| UP300 | 30A | | 3mΩ |
| UP400 | 40A | AC 125V 10,000A | 3mΩ |
| UP500 | 50A | DC 125V 1,000A AC 250V 2,500A | 2mΩ |

*1 : at 10% max. of rated current

Clearing Characteristics



I²t Characteristics

